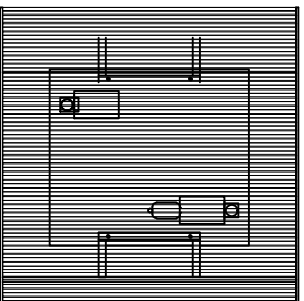


Trade Mark:
CRYSTAL WORLD INC

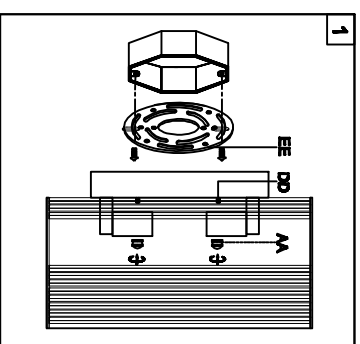
Product Name: Wall lamp
Model :5320W10C
120V/ac, 60HZ,AC ONLY
Lamp Size:110" *H10" *E5"



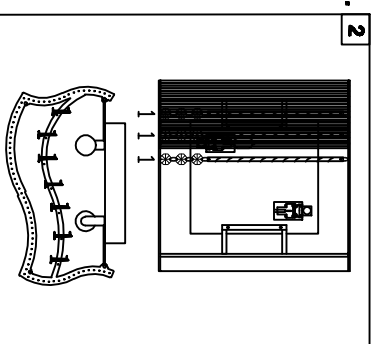
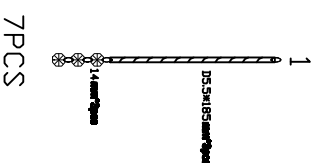
WALL LAMP ASSEMBLY INSTRUCTIONS

1. Place fixture(A) onto mounting screws (DD).secure with cap nuts (AA).

Hardware Used
AA Cap nut 2 X 2



2. Please hang the crystal(1) to the fixture .



3. Install light bulbs (not included).
Use bulb
120V G9 2* 40W Max.

